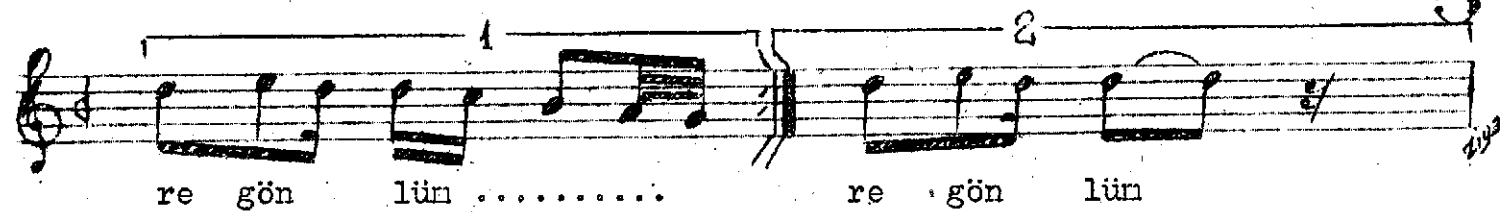
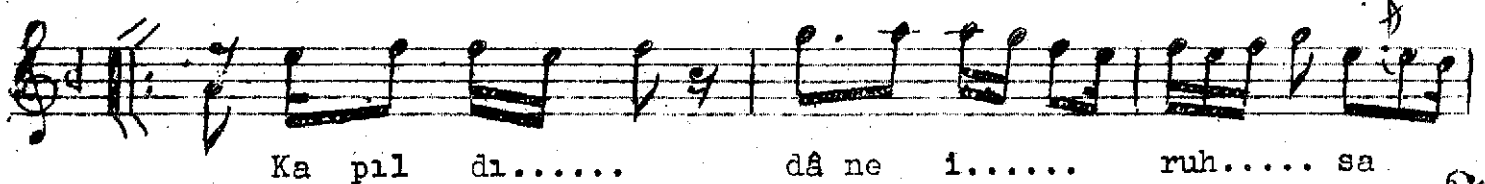
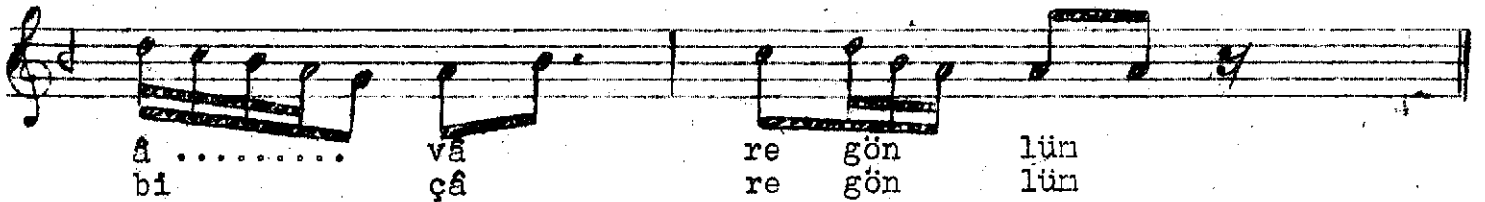
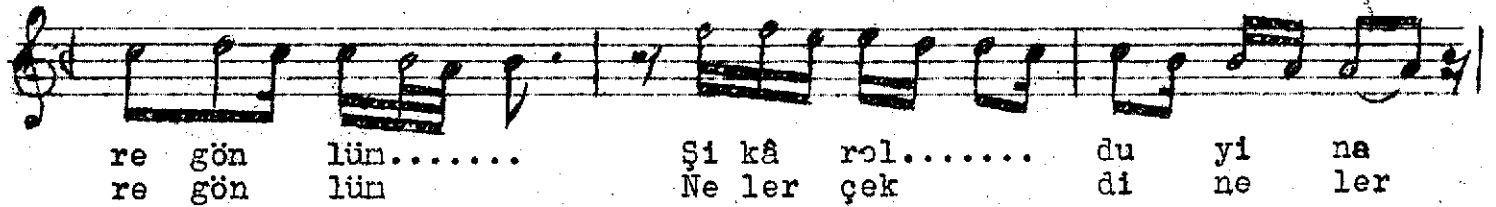
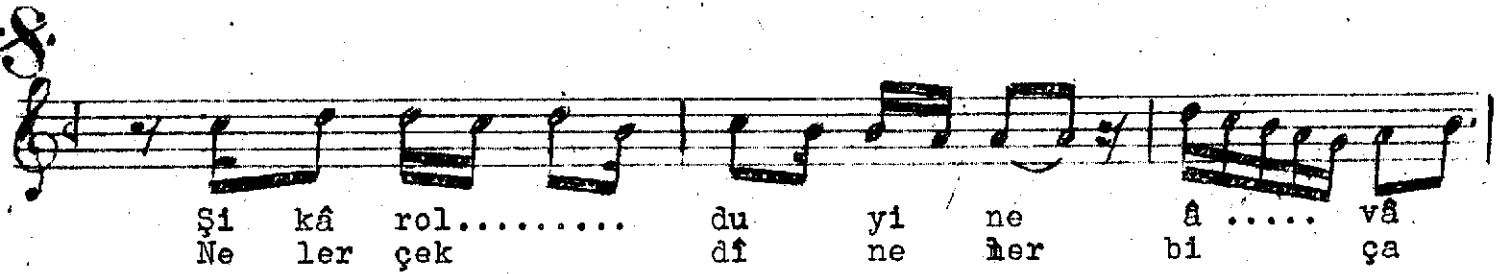
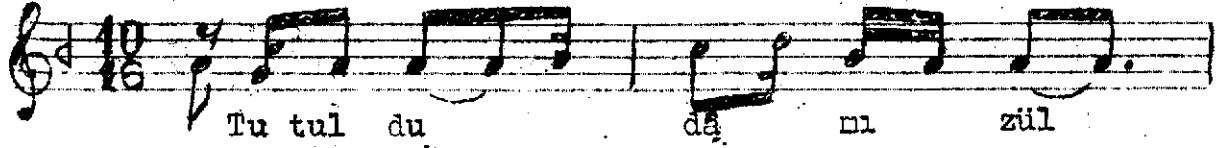


Curcuna



Tutuldu dâñ-ı zülf-ü yâre gönlün
Şikâr oldu yinê âvare gönlün
Kapıldı dâne-î ruhsâre gönlün
Neler çekdi neler bîçâre gönlün.

Dân - tuzak
Zülf - yanağa düşen saç
Şikâr - av
Âvare - başıboş
Dâne - yanaktaki ben
Ruhsâr- yanak
Bîçâre- çaresiz.